

Topic

Citizenship

This week we will explore the native bush around our school. We will investigate the native plants and wildlife.

These are some trees and bushes that are found in the New Zealand bush.

Kahikatea

Rimu

Rata

Matai

Pukatea

Tawa

Coprosma

Ponga

Silver fern

Use google images to look up some pictures of the trees. Draw 2 trees and label.

As "Good Citizens" what can we do to help our native bush?

Haiku Poem

POETRY WRITING

HAIKU

A haiku is an old Japanese form of poetry that has 3 lines and has a nature theme.

The first line has 5 syllables,
the second line has 7 syllables
the third line has 5 syllables

**small bird flying high
sun beats hot upon your wings
swoop down to cool ground**

In class we are going to create some leaf haiku poems.

Pick an idea from nature to write a haiku poem about.

a leaf, the wind, a river, a bird

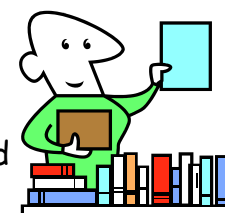
Brainstorm as many words as you can about your theme. Then arrange the words into a haiku poem using the pattern of 3 lines and 5, 7, 5 syllables.

Maths

Practise your skills using Mathletics. Spend around 15 minutes each night on Mathletics to brush up your basic facts knowledge. Check out your group activities. Work on your NEXT LEARNING STEPS on your wiki page.

Reading Log

Keep up your daily reading log - write down how many pages you read each evening.



Date	Title
4th	
5th	
6th	
7th	

Spelling results

I knew how to spell _____ out of 10 in last week's spelling test!

This week I will try for _____ out of 10.

From the teachers:

- Today we watched the performance from Blu Guru. Ask your child to tell you about the performance.